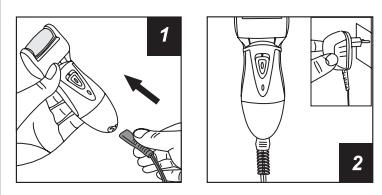


## YOUR QUICK GUIDE FOR YOUR NEW RECHARGEABLE CALLUS REMOVER

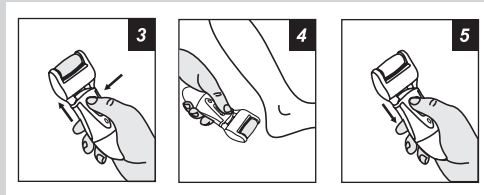
MODEL: ZR-CR200

- 1:** Before using for the first time charge the unit for 10 hours (**fig 1 & 2**).
- 2:** Turn the unit on by pressing the safety switch lock, in the center of the on/off switch and at the same time push the switch up to turn on (**Fig 3**).
- 3:** Gently rotate back and forth or side to side (**fig 4**) over the callus/corn/hard skin area for no more than 2 to 3 seconds in any one spot at a time. Stop and check if you have achieved the softness you desire. If not, go over the area for 2 to 3 seconds more and check again. Continue to use this method until the level of smoothness is achieved. The unit will stop if it is pressed down too hard on the skin.
- 4:** Turn the unit off by pushing the on/off switch down. (**fig 5**)
- 5:** Rinse the skin or use a wet towel to get rid of the excess dead particles.
- 6:** Clean the roller head with the brush included and rinse under running water (**fig 6 & 7**)

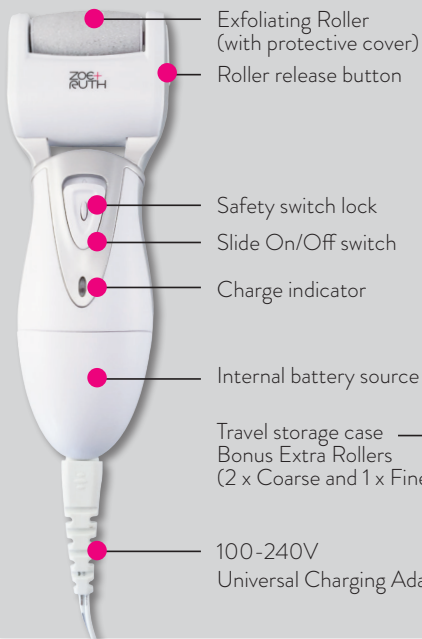
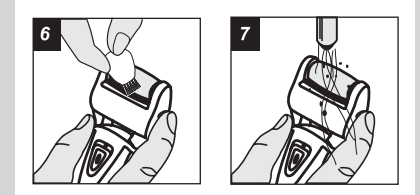
### HOW TO CHARGE.



### HOW TO USE.



### HOW TO CLEAN.



### HOW TO CHANGE THE ZOE+RUTH ROLLER HEADS

- 1:** To remove roller, press button on right hand side to release head
- 2:** Pull head from right side up and out.
- 3:** To replace, put one side of the roller into groove then push other side down.



### Please Note:

- The callus remover is designed to be used on the feet and heels only.
- Do not hold on one spot generally for more than 2 or 3 seconds.
- Do not use on warts, sores or open wounds.
- Each head is recommended for one person only – for hygiene reasons.
- Do not turn on if roller grinding head is not attached.
- See full instructions for all safety warnings and how to charge, use, change heads, clean and store the Callus Remover.
- Discontinue use immediately if you experience any pain or irritation.

- + Zoe+Ruth Rechargeable Callus Remover, Foot File
- + Color: Metallic Silver/White with Black Travel Case
- + Model: ZR-CR200
- + Input: 100-240V 50~60Hz (International Plug)
- + Charge time: 8-10 hours
- + Power: DC 3V 200mA